

A-16 User manual

One-touch battery operation strapping tool



1.Safety instructions

Correct training is required. Personnel who are not properly trained are not allowed to operate the strapping machine. Incorrect operation may result in equipment damage or personal injury.

1.1 Battery operation

*Environmental protection

Please do not throw the used battery into the household garbage can or waste water bucket, please do not hit or burn the wasted battery.

* Short circuit hazard

Do not store the batteries with other metal objects.

Please do not disassemble the batteries yourself and store them in a dry and frost-resistant room. The ambient temperature must not be higher than 50 degrees.

Do not charge used batteries and please replace them with new ones when they are damaged or unusable.

1.2 Eye injury hazards

Please wear eye protection to prevent damage to your eyes when using this product.

1.3 Operation

Please read the instructions carefully and train properly before use.

Persons who have not been properly trained are not permissible to operate the baler, before tightening the straps, if the instructions are not followed or if the strapping is loaded unreasonably can lead to breakage of the strapping or machine failure. Do not put your hands on the binding area, the gluing area or the cutting area of the cutter until you are familiar with the baler. Place your hand on the binding area, the gluing area and the cutter cut-out.

1.4 Friction welding area

You should check the condition of the friction welding area and familiarise yourself with the control and adjustment of the friction time and tightening time. Irregular friction time may result in poor bonding and lead to serious damage, so please do not ship or transport boxes that have not been properly packed and handled.

1.5 Packing straps distribution

Please use the specially designed belt tray carriage to dispense the straps. When not in use, secure the end of the straps in the strapping fixing opening.

1.6 Straps warning

Do not use straps to drag or lift loads as this may result in damage to objects or personal injury.

1.7 Hazards of straps breakage

Improper operation; excessive tightened; not using the strapping as required will cause the tension force to be lost or the strapping to break, which may eventually cause the box/cargoes to be damaged and the object to be broken, the operator to lose balance and fall, or the strapping machine and the strapping to fly rapidly into the operator's face together causing injury

■ Note:

*If the load is packed with sharp edges please add edge protection.

*Wrap the straps around the appropriate area to be strapped.

*The operator should not be in the same straight line position as the strapping machine during tightening and friction to prevent the baler and the straps from tipping over into the operator's face. And remind or ask bystanders to stay away from the operating area during operation. Please also use the strapping with the recommended width and strength specifications, which will help to improve the quality and efficiency of the packaging, as unsuitable strapping may cause the strapping to break or the box to come loose during transportation.

1.8 Cutting straps

When cutting the straps, please use the appropriate cutting tool and keep a safe distance from people, not in the same line as the straps and away from the loose direction of the strapping. Please

use the tools specifically designed for cutting straps, no hammers, pliers, axes, hacksaws etc.

1.9 Slip and fall hazards

Please keep the strapping area clean and tidy, as untidy work areas can cause accidents and falls can occur if you do not land well or are unbalanced before tension, especially in small work areas such as stairwells. Try to keep your balance when handling. Both feet must be on a flat and firm surface at the same time. Do not operate the device when you are unwell or in a difficult physical condition.

Please note the precautions mentioned specifically for the work area.

1.10 Dangers of the baler

*Good maintenance of the baler is very necessary.

*Check the baler parts regularly, if there is wear or damage, please do not continue to use the baler until the parts are replaced.

*Do not use the baler without the straps

*Do not modify the baler as this may cause personal injury.

2. Technical parameters

2.1 Description of the battery strapping tool

A-16 battery strapping tool (or called baler) comes with two working modes-semi-auto and auto. The auto mode can make users enjoy a

way of one-touch operating, which is more convenient. A-16 has its max tension power at 3200N, 9 grades can be adjusted by Digital display operation. It is powered with high capacity 6000mah lithium battery, which make it work about 600 strapping cycles per charging. One of the key selling points is that it is good in quality and cheap in price compared with the similar ones in the market. It is a really good product for dealers to explore the market. A-16 is a powerful tools and can be widely used in most industries.

2.2 Baler dimensions

Length: 370MM

Width: 140MM

Height: 120MM

Net weight: 2.8KG (without battery 6.0A)

Battery weight (6.0A): 720g

2.3 Strapping materials

Straps material: PET (polyester) and PP (polypropylene) tape with flat or embossed surface. Straps specifications: width 9-16MM, thickness 0.5-1.2MM.

Please choose the appropriate size of straps according to the baler you buy.

2.4 Straps strength

Stretching force: adjustable from 500 to 3200 N, maximum value is

determined by the material of the straps.

Strap feeding in speed: 50-150MM/S. Friction strength: approx. 75% of the strength value of the straps.

2.5 Working environment

The ambient temperature for operation is 5-45°C, with an optimum working temperature of 15-25°C.

Use or store with care to protect against water and moisture.

3 Accessories

■ Note: Please use the attachments or accessories mentioned in the manual, the usage of other attachments may cause damage to the equipment or may cause person injury.

3.1 Rechargeable portable baler

As the baler uses nickel-cadmium (Nicc) nickel-metal hydride (NiMH) batteries, please purchase the batteries separately according to the following parameters.

Type:Lithium Battery

Voltage:14.4V Capacity:6000MAH (3.0MAH are optional) ,10C.

3.2 Battery charger

Fast charger

Charger input voltage: AC 100-245V. 50/60HZ

Output voltage: DC16.8V,6A

Charging time: about 45-60minutes.



Direct charging (optional)

Charger input voltage: AC100-245V

Output voltage: DC16.8V, 3.0A

Charging time: about 90minutes.



3.3 All tools are packed in cardboard + pearl cotton. Each unit comes with a set of common tool kit



4 Operations

4.1 Battery installation

*Do not leave baler batteries in the rain or water.

*For safety reasons the battery is delivered uncharged and separated from the device, please follow the instructions for assembly.

*Remove the battery by pressing the battery Clip Snap with your thumb and extracting it upwards or by releasing the Clip Snap after loading the battery.

*The indicator light is red when the battery is low, the indicator light is red when charging, the charging indicator light is green when charging is complete.

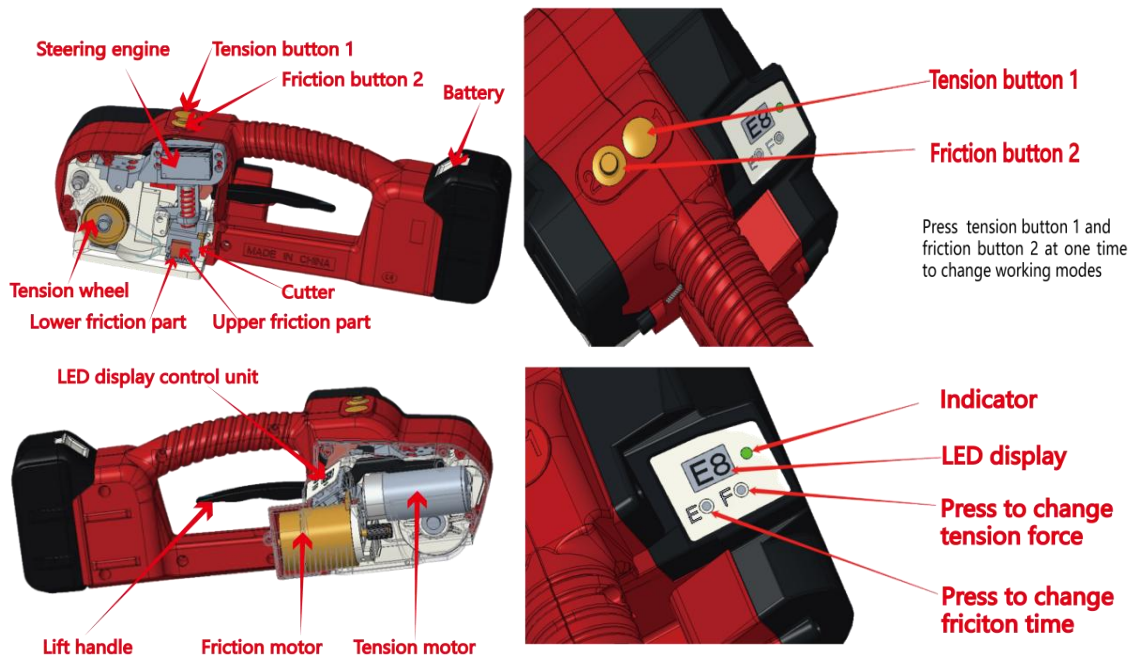
Battery disassembly diagram



Unload battery

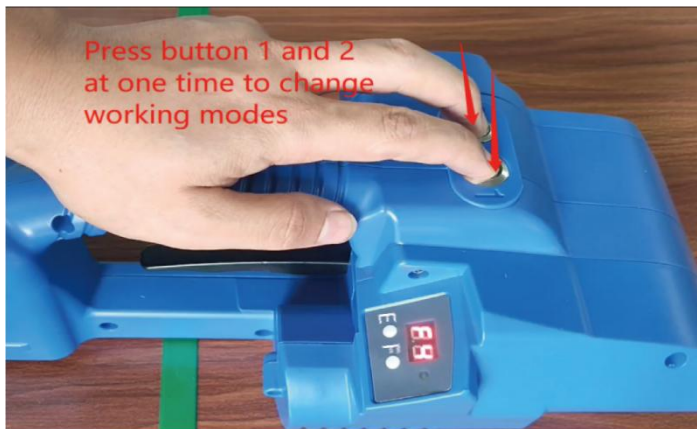
Loading battery

4.2 Operating elements



4.3 Semi-auto mode and auto mode

A-16 has 2 working modes: semi-auto mode and auto mode. How to make mode conversion? Just press the friction button 2 and tension force 1 button at one time and when the indicator flashes alternately, the mode conversion is done.



4.4 Baler operations

***Semi-auto mode**

Step 1 Wrap and stack the straps

Please wrap the straps in the way as shown and do not allow the straps to get wet with oil or other debris at any time.



Step 2 inserts the straps into baler

When inserting the straps, the straps in the direction of tension must be stacked at the top end, the bottom strapping should be

stretched to the bottom of the feeding wheel to cover the front of the tooth plate 5-10MM longer, when inserting the straps, please lift the handle with your right hand, insert the straps with your left hand, the upper and lower ends of straps must be stacked parallel to each other after releasing the lift handle.



Step 3 Tighten or feeding in the straps

When you press the tension button 1 and release it, the baler will give you the default preset tightening time. When the tightness is not enough or too tight, just increase or decrease the tension power grade appropriately until it is appropriate. When tightening, keep the baler moving in parallel and the forward direction of the baler free of sundries.



Step 4 Welding the straps

After pressing friction the button 2, the baler automatically seals and cuts the straps (the time is preset by the system and can be increased or decreased adjust the friction time grade).



Step 5 Move away the baler

When the bonding operation is complete, lift the handle and feeding wheel run reversely to loose the straps accordingly and then move away the baler.



***Auto mode**

Step 1 Wrap and stack the straps

Please wrap the straps in the way as shown and do not allow the straps to get wet with oil or other debris at any time.



Step 2 inserts the straps into baler

When inserting the straps, the straps in the direction of tension must be stacked at the top end, the bottom strapping should be stretched to the bottom of the feeding wheel to cover the front of the tooth plate 5-10MM longer, when inserting the straps, please lift the handle with your right hand, insert the straps with your left hand, the upper and lower ends of straps must be stacked parallel

to each other after releasing the lift handle.



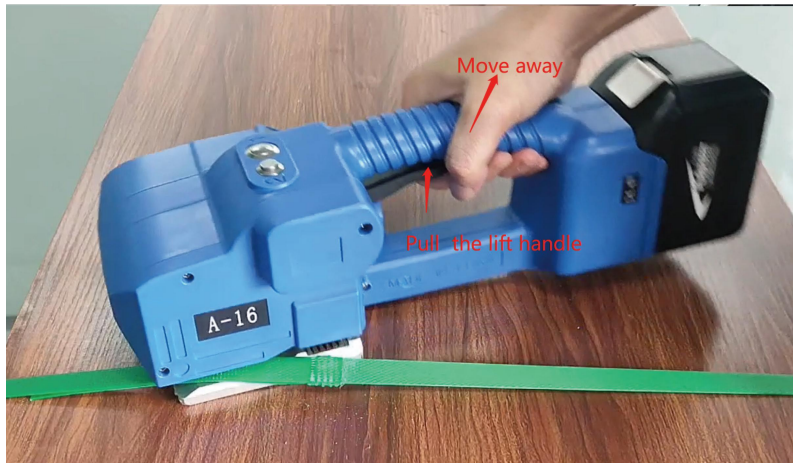
Step 3 Tighten and seal straps

When you press the tension button and release it, the baler will tension ,seal and cut the straps automatically.

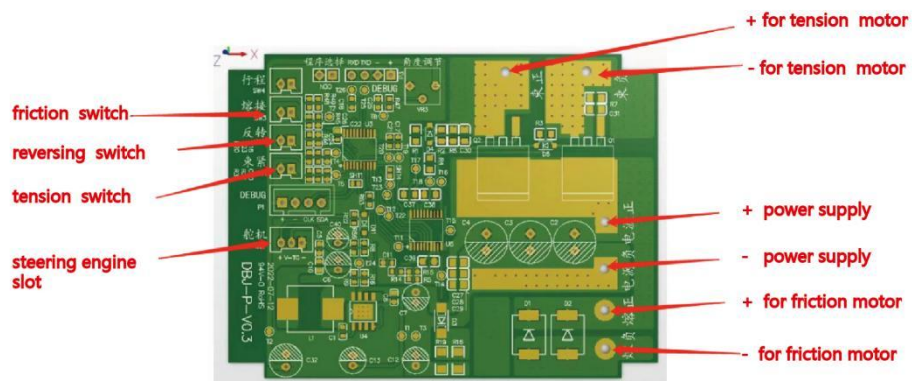


Step 4 Move away the baler

When the bonding operation is complete, lift the handle and feeding wheel run reversely to loose the straps accordingly and then move away the baler.



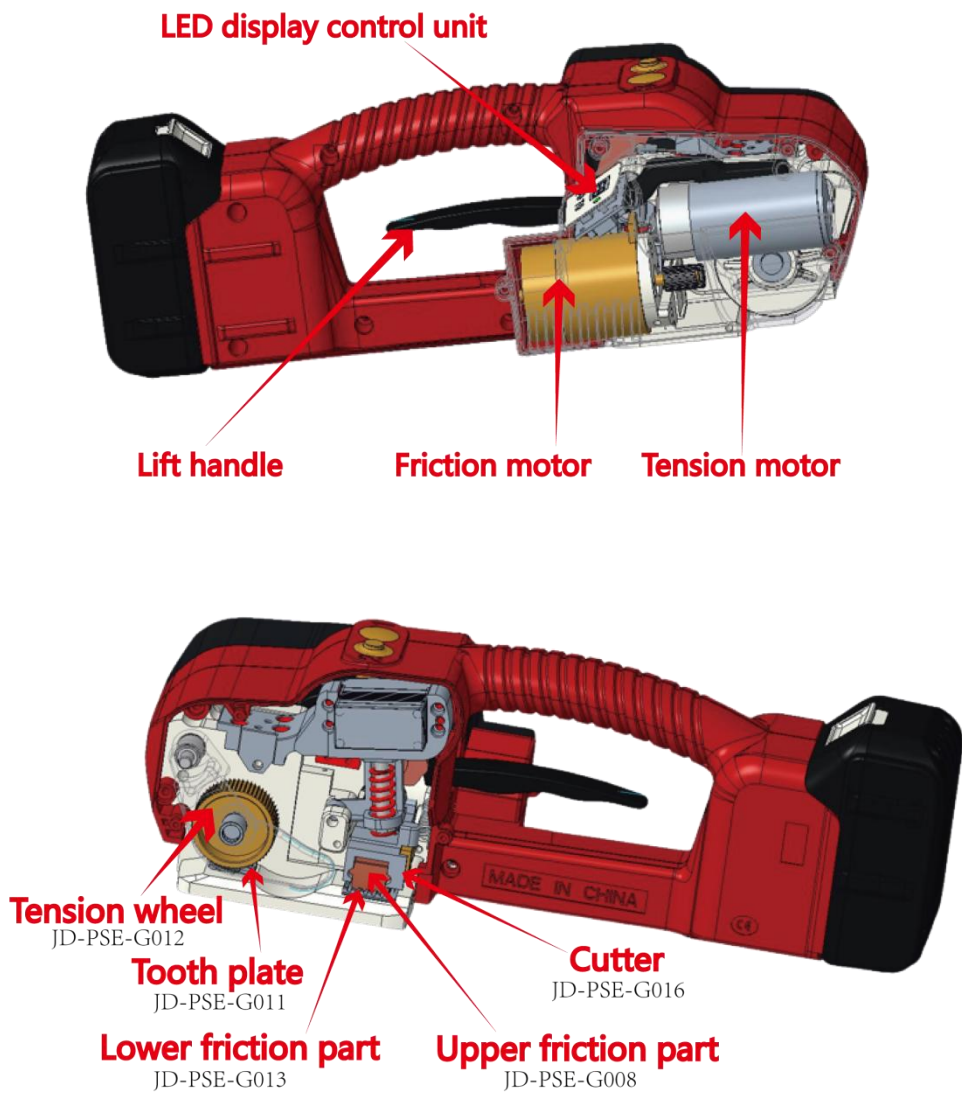
5 Electrical connections



6 Wear parts replacement & bonding state adjustment

■ Note: Please disconnect the power switch and remove the batteries before each service.

6.1 Wear parts replacement



Cutter (JD-PSE-G016): first loosen the screws on the left cover plate (JD-A16-G01) and remove them, then remove the screws on the cutter and remove the cutter for replacement. After the cutter is installed, install it in the reverse order.

Lower toothed plate (JD-PSE-G011): first remove the screws fixing the toothed plate and remove it, then replace the ejected toothed plate. After replacement, assemble it in the reverse order.

Tightening wheel JD-PSE-G012): please remove the left cover plate as described above, remove the nut fixed on the connecting shaft (JD-PSE-G021), then remove the tightening wheel cover plate (JD-PSE-G007), replace the tightening wheel and install it in the reverse order.

Lower washboard (JD-PSE-G013): first loosen and remove the headless screws fixed on the lower washboard shaft, push out the lower washboard from the bottom end for replacement, and replace it in the reverse order after replacement..

6.2 Tightening, bonding and cutting adjustments

① If the tightening is slipping, loosen the screws fixed on the toothed plate and add the toothed plate gasket (JD-PSE-G028) to raise the toothed plate or replace the toothed plate or the tightening wheel.

② The bonding time and the tightening tension are adjusted by the E key and the F key under the digital window on the right cover of the equipment. The E key is at E1-E9, and the bonding time increases step by step; The gear of F key is F1-F9. The tightening force increases step by step. When adjusting, press and hold the corresponding e key or F key directly under the power on state. By

default, the system increases from grade 1 to grade 9 step by step.

③ Refer to the following chart for wear part replacement and bonding&welding time (effect) adjustment.

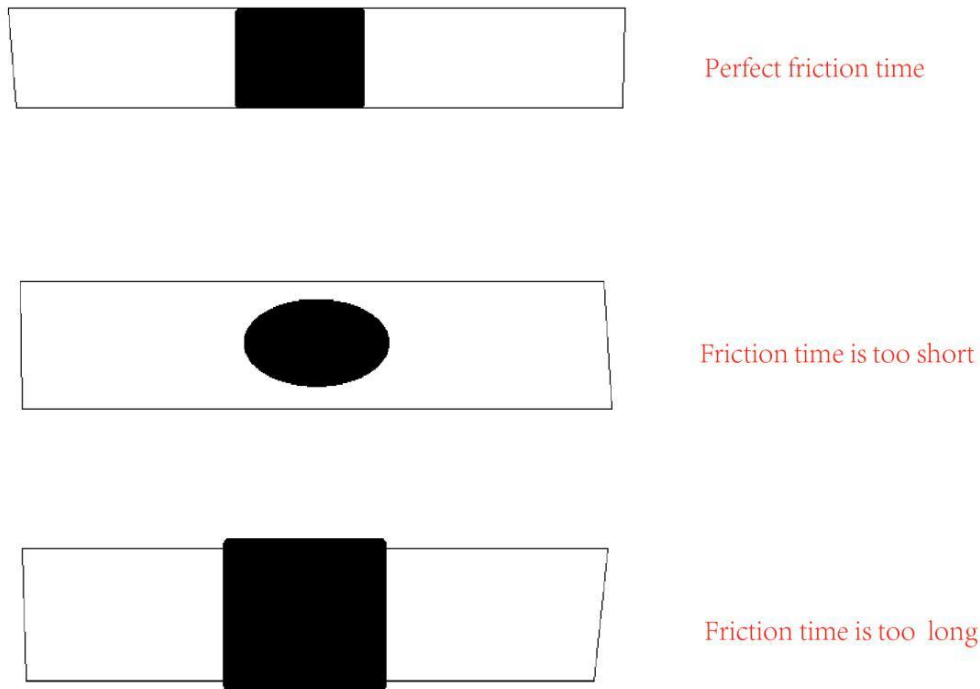


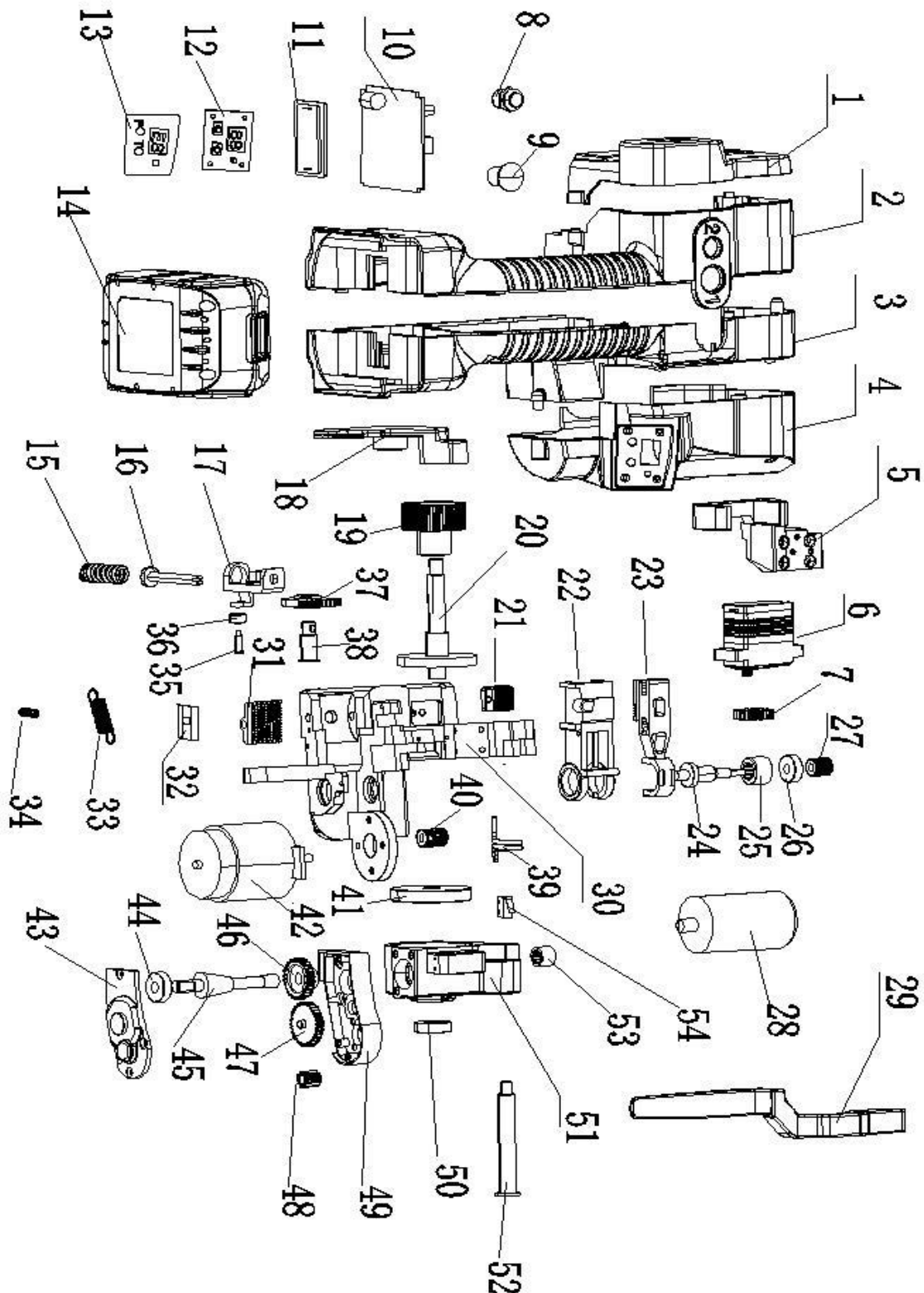
Diagram of welding & bonding effect

7 Common electrical faults

In the process of using, the baler tool suddenly jammed and LED shows red when the baling belt stuck in the machine can not be taken out, please immediately turn power off, cut off the straps to remove the straps stuck in the tool, promptly charge the battery or replace the battery. When confirm the battery has power and the fault is not eliminated, you must remove the left and right plastic covers after removing the battery to check the tool, such as

checking the switches or the wiring on each switch or on motors has not fallen off, or replace the micro switch or replace the friction sealing motor.

8 Product exploded view and parts list



Product breakdown diagram


Table 1: Comparison table of parts assembly

No.	Part Name	Material Code	Qty.
1	left cover 1	JD-A16-G01	1
2	left cover 2	JD-A16-G02	1
3	right cover 1	JD-A16-G04	1
4	right cover 2	JD-A16-G03	1
5	base of steering engine	JD-A16-G01-1	1
6	steering engine	JD-A16-E01	1
7	gear of steering engine	JD-A16-G004	1
8	friction button	JD-PSE-E039-1	1
9	tension button	JD-PSE-E039	1
10	PCB board	JD-A16-E019	1
11	battery adapter frame	JD-L16-G06	1
12	digital tube module	JD-L16-G05	1
13	Digital display adhesive tape	JD-A16-G07	1
14	battery	JD-PSE-E051	1
15	Compression sprin	JD-PSE-G020	1
16	shaft	JD-PSE-G022	1
17	Cam base	JD-PSE-G010	1
18	tensioner cover plate	JD-A16-G007	1

19	Tension wheel	JD-PSE-G012	1
20	Curved umbrella tooth	JD-PSE-G029	1
21	Toothed plate	JD-PSE-G011	1
22	Friciton part bracket	JD-PSE-G009	1
23	Upper friction part	JD-PSE-G008	1
24	Eccentric shaft	JD-PSE-G024	1
25	Bearing IK0	JD-PSE-E014	1
26	Bearing 606	JD-PSE-E011	2
27	Synchronous wheel	JD-PSE-G035	1
28	Tension motor	JD-PSE-E017	1
29	Lift handle	JD-PSE-G004	1
30	Base bracket	JD-A16-G001	1
31	Lower friction part	JD-PSE-G013	1
32	cutter	JD-PSE-G016	1
33	drag spring	JD-PSE-G017	1
34	spring for cutter	JD-PSE-G018	1
35	4*12.5 pin	JD-PSE-E022	1
36	Cam driver	JD-PSE-G038	1
37	gear for pression	JD-A16-G014	1
38	Shaft pin	JD-PSE-G023	1
39	Torsion spring	JD-PSE-G019	1
40	Synchronous wheel	JD-PSE-G034	1

41	Bearing cover	JD-PSE-G015	1
42	Friction motor (DC)	JD-H16-E03	1
43	Cover for gearbox	JD-PSE-G006	1
44	Bearing 607	JD-PSE-E012	1
45	Worm gear	JD-PSE-G030	1
46	Connect-gear for worm	JD-PSE-G033	1
47	Double gear	JD-PSE-G031	1
48	Gear for tension motor	JD-PSE-G032	1
49	Reduction gearbox 1	JD-PSE-G002	1
50	bear	JD-PSE-G010	2
51	Reduction gearbox 2	JD-PSE-G003	1
52	M6 boss pin	JD-PSE-G021	1
53	Bearing BK0810	JD-PSE-E015	1
54	Reverse switch	JD-PSE-E007	1

Table 2: List of other accessories

<i>Item</i>	<i>Name</i>	
1	<i>Tool unit</i>	 <p>Carton size: 45cm*29cm*17.5cm Gross weight: 5.5kg (with 1battery) Net weight: 3.4kg(included battery)</p> <p>45cm</p> <p>29cm</p> <p>17.5cm</p> <p>Tool unit</p> <p>Repair tool kit</p> <p>Fast charger</p> <p>User manual</p>
2	<i>Fast charger</i>	
3	<i>Box with pearl foam</i>	
4	<i>User manual</i>	

5	<i>Battery</i>	
6	<i>Repair tool kit</i>	

9 After Sales Service

9.1 Product warranty card

Warranty period: one year from the date of purchase for the whole tool.

Warranty instruction: During the warranty period, for any fault caused by the quality problem of the product itself, the user can contact the dealer or our after-sales service personnel with a valid purchase certificate to enjoy the warranty service.

User information	Customer Name	
	Customer Address	
	Customer Phone	
Product information	Product type	
	Product number	
	Date of purchase	
	Where to buy	
	Purchase invoice	

	number	
Dealer Information	Service outlets	
	Service calls	
	Free warranty period	12 months from the date of purchase (based on the date mark on the tool)

9.2 Description of the warranty

Note: The following situations are not covered by the product warranty

*Damage caused by the user not operating the product in accordance with its instruction manual.

*If the user uses, keeps or maintains the product improperly, drops it or damages it with water.

*Failure or damage to the product caused by the use or replacement of parts not supplied by our company.

*Without a valid purchase invoice and warranty card, or if the purchase invoice is different from the machine model or Where the machine number does not match and where the purchase invoice has been altered.

*Whole tool and parts that have exceeded the warranty period.

*Cutting knives, timing belts, motors, PP housings/covers,

supporting tools and other wear parts.

*Damage caused by other force majeure such as natural disasters.

9.3 Notes

1 This warranty card and a valid purchase invoice are important documents for the enjoyment of the product warranty service.

Please keep it in a safe place.

2 Non-free warranty service range of products and services, the company's people are enthusiastic to provide you with a services for a fee.

3 Users in all regions of the country who need to purchase, repair or maintain the machine should call the company service

Hotline 0769-87287255/0769-87287355 or contact the company's sales and after-sales service person for help.

Email: jdpack_sales01@163.com

Date of service	Reason for service	Services in details	Service staff	User signature	Remarks
